

VINYL WINDOWS & DOORS

By
FLEETWOOD



FLEETWOOD

FLEETWOODUSA.COM

HIGH-PERFORMANCE VINYL WINDOWS



Energy Efficient Means Smaller Energy Bills

Because vinyl windows and doors keep cold air out in winter and warm air out in summer, less energy is required to maintain your overall comfort from one season to the next.

Feel Safe and Secure

By exceeding stringent industry standards for forced entry, Fleetwood Vinyl Windows and Doors deter break-ins and give you invaluable peace of mind.

Add Value and Beauty to Your Home

The elegant lines and innovative design features of vinyl windows and doors will enhance the beauty of your home and add to its market value. A variety of grid options, shapes, and operating styles are available to fit your unique needs.

Keep Outside Noise from Coming In

Vinyl windows and doors help create a calm environment inside your home by eliminating busy traffic noise, blaring stereos, and other exterior noise.

Eliminate the Hassles of Wood

Unlike wood windows, which often crack and peel despite constant maintenance, Fleetwood Vinyl Windows and Doors require very little care and never need painting. Just wipe them clean with soap and water to keep them looking new for life.

Easy to Use

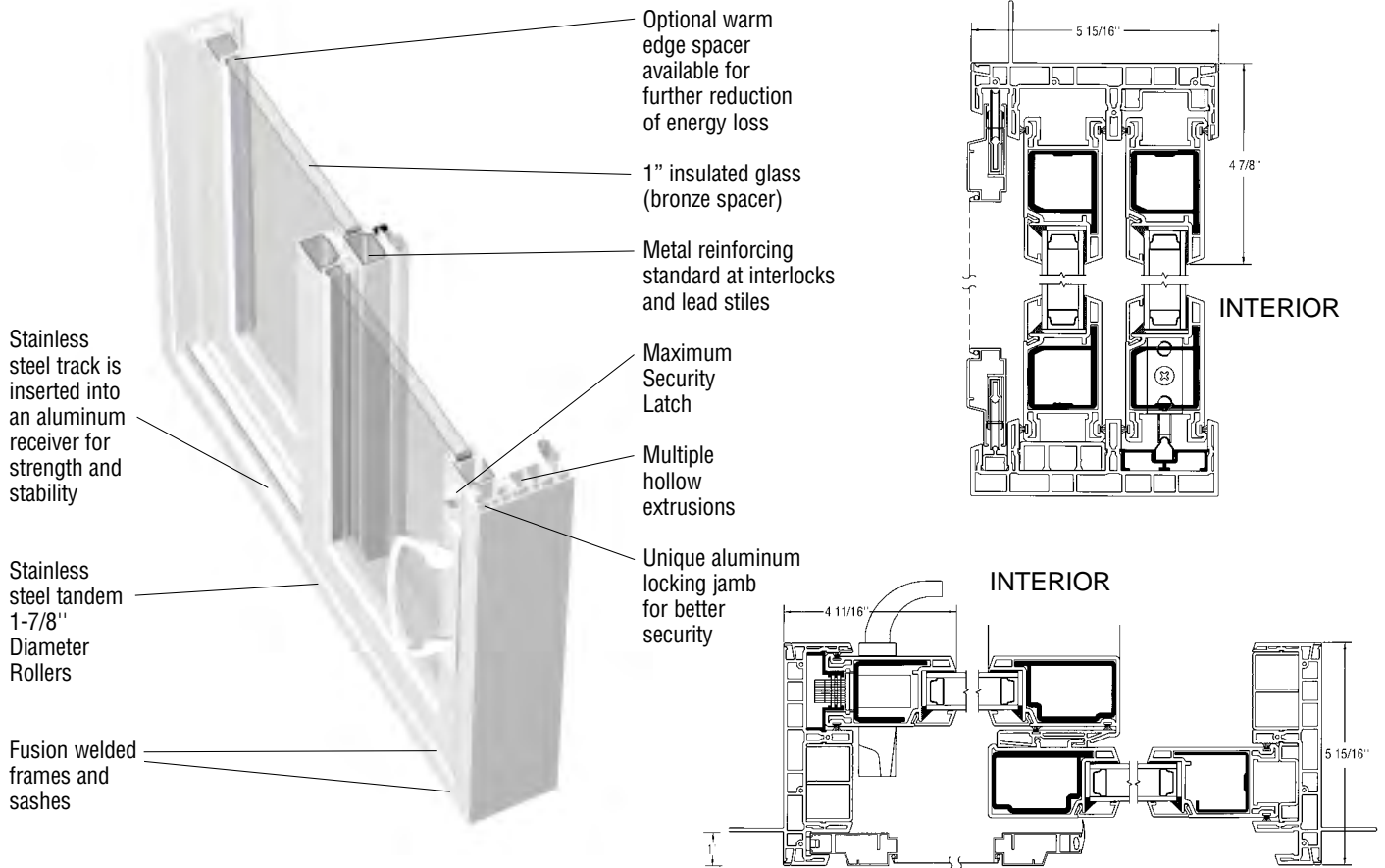
Thanks to durable hardware and superior workmanship, opening and closing your Fleetwood Vinyl Windows and Doors will still be a pleasure for many years to come.

Only the Highest Quality Vinyl for Our Windows and Doors

After many years of researching and testing the quality of different PVC window compounds and systems on the market, we finally found one that met our tough standards for performance, strength and durability. It enables our vinyl windows and doors to meet or exceed NFRC thermal and AAMA structural performance standards, while standing the test of time in extreme environmental conditions such as desert heat and mountain cold.



VISTA SERIES 7000 SLIDING GLASS DOOR



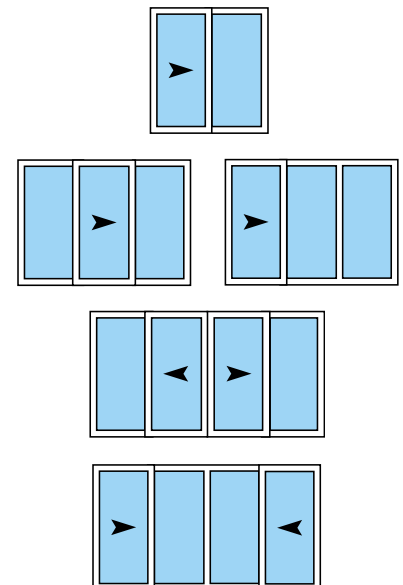
- **EXCEPTIONALLY STRONG**, the Vista 7000 has been designed to meet critical specifications for use in large sizes and where high structural ratings are necessary. This is perhaps **the strongest vinyl sliding door** you will ever see.
- **CORNER INTEGRITY?** The fusion weld process that joins the frame and vent corners is critical for strength and leak prevention. Fleetwood gives a customized touch to each window and provides a 30-second weld to provide the strongest corner in the industry. Find out how long the “other guys” weld.
- **METAL REINFORCING** is standard in the vertical extrusions. This heavy-duty construction **assures the stiffness and stability** needed in high load applications.
- **THOROUGHLY TESTED** to AAMA standards, The Vista 7000 door has achieved an **HC50** rating for 8’ heights and a **C30 for 10’ heights** in two panel configurations.
- **THE VISTA DOOR** is available in two, three, and

four panel configurations **up to 10’0” high** and available in a block frame or a nail on frame with a 1” setback.

- **STANDARD HARDWARE** consists of an attractive inside handle and a **Maximum-Security latch**, with thumb turn.
- A **STAINLESS STEEL TRACK** is inserted into an exclusive aluminum receiver in the sill to provide greater strength and stability to the rolling system. **This is a Fleetwood exclusive.** This is not simply a “cap” over a vinyl track that some use. Caps will likely become loose in time and rattle or fall off.
- **WHEEL ASSEMBLIES** are adjustable **stainless steel tandem** rollers, designed for smooth operation and durability.
- **HEAVY DUTY DOOR SCREENS** are **standard** on the Vista Series 7000.
- **WEATHER PERFORMANCE** for the Vista 7000 is **easily accomplished** because of its superior design and exceptional strength.
- **1” INSULATED GLASS** reduces heat transfer and adds to your comfort. Authorized Dealers can buy this product without glass. **If you desire factory glazing** and the subsequent warranty, factory glazing must be specified.
- **ALUMINUM DETAILS!** The Vista 7000 is the only vinyl door on the market with an aluminum (painted to match vinyl) screen track and head, jamb and sill closer. What does this mean to you? It means these “incidental” parts will not curl or distort after a few years of exposure to the elements.
- A **UNIQUE LOCK JAMB** is standard on the Vista 7000. **This attractive feature maximizes the security of this door** by providing stainless steel strike plates. Compare with the “other guys”.
- **IMPACT TESTED!** The Vista 7000 has successfully been **tested to Dade County Florida large missile**

impact criteria. Contact the factory or visit the website for specific information.

- **THE SCREEN DOOR** on the Vista 7000 is an aluminum extruded frame that compliments the robust quality of the Vista door panels.



MALIBU SERIES 300-SH SINGLE HUNG

Fusion welded corners and multiple hollow chambers for strength and energy efficiency

Designer hardware with stainless steel strike

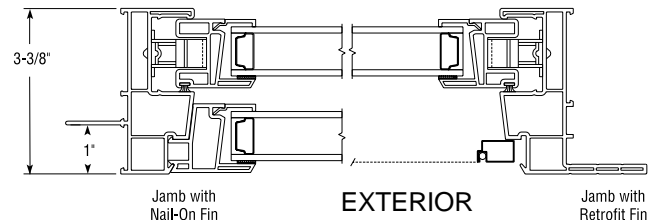
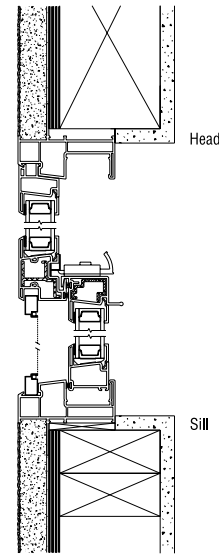
Optional warm edge spacer reduces energy loss and condensation

Integral lift rail

1" overall insulated glass (bronze spacer) for maximum energy performance (single glaze also available)

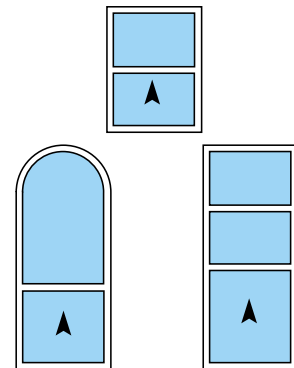
Metal reinforcing standard in both interlocking rails

Dual weatherstrip

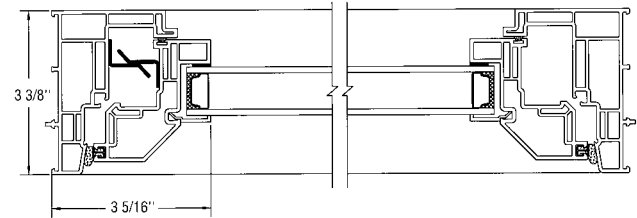
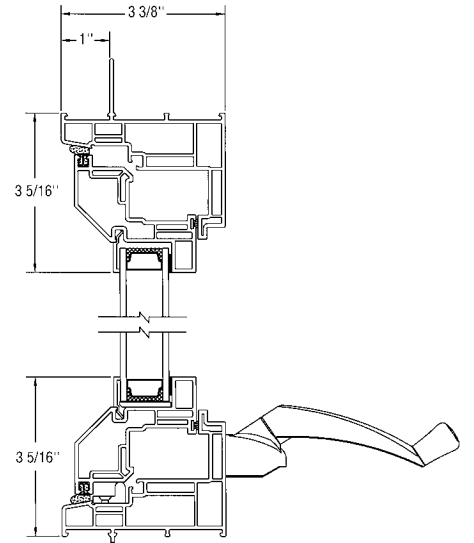
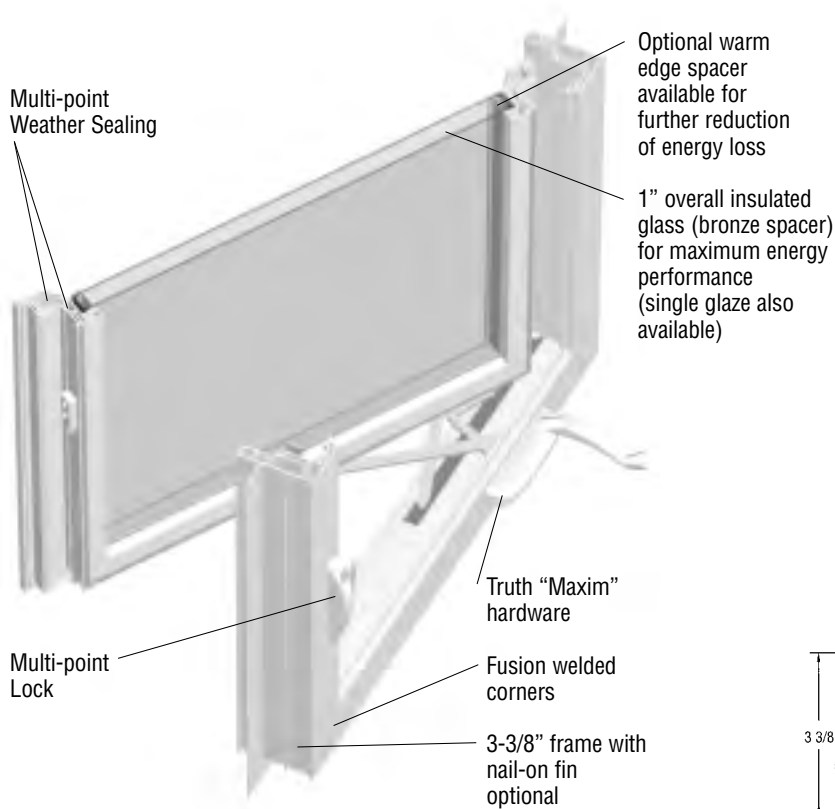


- **ALTHOUGH** the Malibu 300-SH is attractive, **it's performance is not compromised!** Tested and certified as an AAMA LC 30, this window performs!
- **1" INSULATED GLASS** reduces heat transfer and adds to your comfort. (An optional "warm-edge" spacer is available for even better performance.) Authorized Dealers can buy this product without glass. If you desire factory glazing and the subsequent warranty, factory glazing must be specified.

- **A COMPLETE LINE OF GLASS OPTIONS** allows you to achieve maximum comfort and efficiency.
- **CORNER INTEGRITY?** The fusion weld process that joins the frame and vent corners is critical for strength and leak prevention. Fleetwood gives a customized touch to each window and provides a 30-second weld to provide the strongest corner in the industry. Find out how long the "other guys" weld.
- **INTERNAL GRIDS?** Yes! Our competitors will offer roll formed aluminum grids but Fleetwood customers demand more. Therefore, **we only offer a 1" extruded grid** which has a beveled shape that compliments any home.
- **ONLY EXTRUDED SCREEN FRAMES!** Fleetwood customers require exceptional features in our products. **We are proud to be the only vinyl window** company that offers **ONLY** extruded aluminum screen frames. Over the years screens are removed many times and roll formed frames will not last. We know because we used to offer roll formed screens!
- **THREE FRAMES** are available in the 300-SH Single-Hung, 3-3/8" Nail-On with 1" set-back, 3-3/8" Block, and 3-3/8" Retrofit.
- **COLORS AVAILABLE** in the Malibu 300-SH are white and almond.
- **THE HARDWARE** is attractive and functional, featuring a **self-latching assembly with a stainless steel strike**. It has been tested and certified to meet or exceed the toughest forced entry requirements.
- **RUGGED CONSTRUCTION** in the master frame and panels provide durability, and a beautiful complement to all types of construction.
- **ENERGY RATED:** All Fleetwood Vinyl Windows meet NFRC rating guidelines.
- **A COMPLIMENTARY** fixed window system is available as well (see back page).



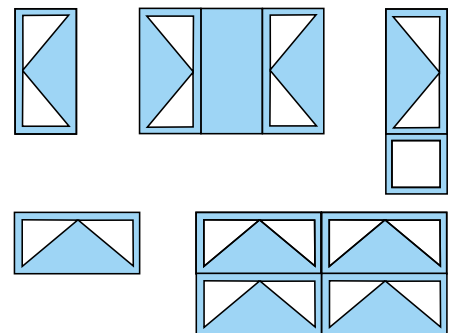
MALIBU SERIES 300-C & 300-A PROJECTED WINDOW



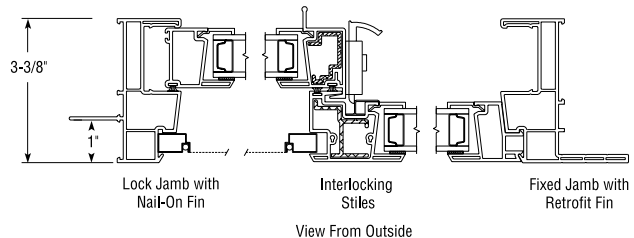
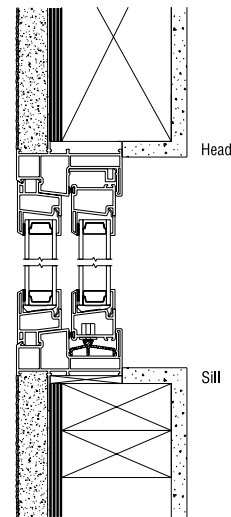
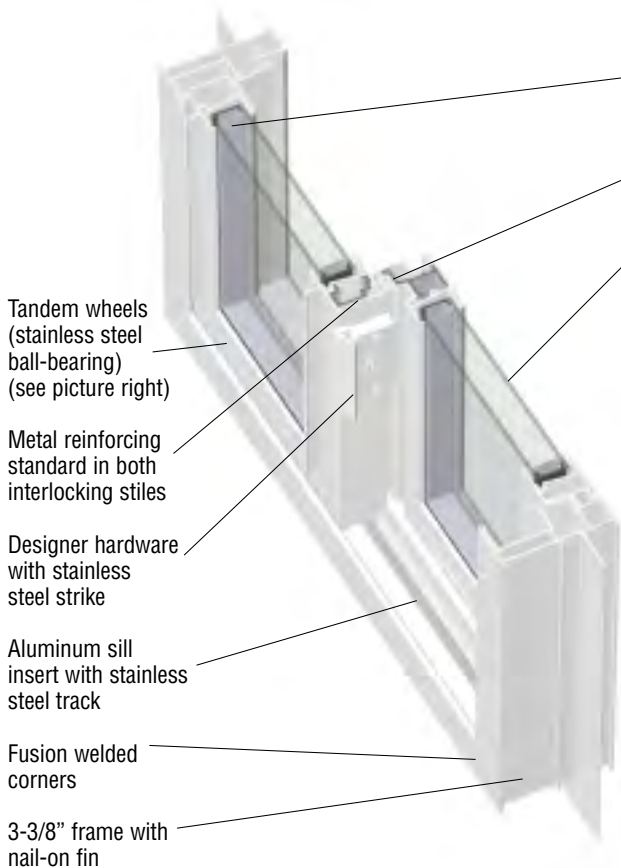
- THE HARDWARE is the best available! **Robust, dual arm operators** and a smooth operating roto gear system make the Malibu the top of the class. Optional stainless steel gear and arm are available upon request.
- CORNER INTEGRITY? The fusion weld process that joins the frame and vent corners is critical for strength and leak prevention. Fleetwood gives a customized touch to each window and provides a 30-second weld to provide the strongest corner in the industry. Find out how long the "other guys" weld.

- GLASS OPTIONS: A complete line of **glass options** such as high performance, energy efficient glass allows you to achieve maximum comfort and efficiency.
- INTERNAL GRIDS are available in a 1" beveled style.
- 1" INSULATED GLASS reduces heat transfer and adds to your comfort. (An optional "**warm-edge**" spacer is available for even better performance.) Authorized Dealers can buy this product without glass. **If you desire factory glazing and the subsequent warranty, factory glazing must be specified.**
- THREE FRAMES are available: 3-3/8" Nail-On with 1" set-back, 3-3/8" Block, and 3-3/8" Retrofit.
- COLORS AVAILABLE in the Malibu 300-A & 300-C are **white and almond**.
- RUGGED CONSTRUCTION in the master frame and panels provide durability, and a **beautiful compliment** to all types of construction.
- OUR MULTI-POINT LOCKING system **will give you the peace you need** to sleep well!

- NFRC RATING guidelines are met by all Fleetwood vinyl windows. Call the factory for a list of values, or **visit us at www.fleetwoodusa.com**
- WEATHER PERFORMANCE is no problem for the Malibu. It is **designed for luxury homes that demand proven integrity** in severe weather conditions.
- A COMPLIMENTARY fixed window system is also available (see back page).



MALIBU SERIES 300-HS SLIDING WINDOW

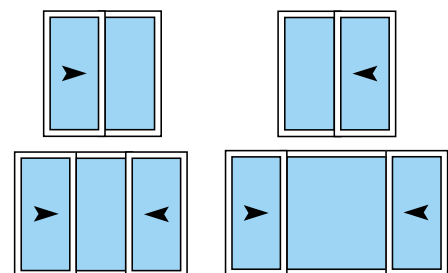


- **THE HARDWARE** is attractive and functional. It features a **self-latching** assembly with a **stainless steel strike**. It has been tested and certified to meet or exceed the toughest forced entry requirements.
- **GLASS OPTIONS:** A complete line of **glass options** such as high performance, energy efficient glass allows you to achieve maximum comfort and efficiency.
- **CORNER INTEGRITY?** The fusion weld process that joins the frame and vent corners is critical for strength and leak prevention. Fleetwood gives a customized touch to each window and provides a 30-second weld to

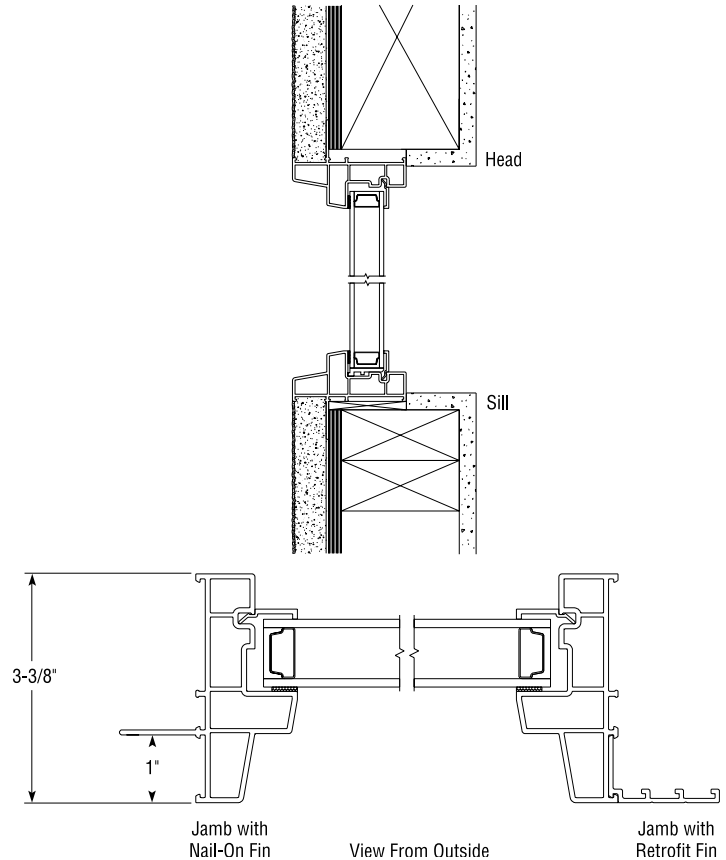
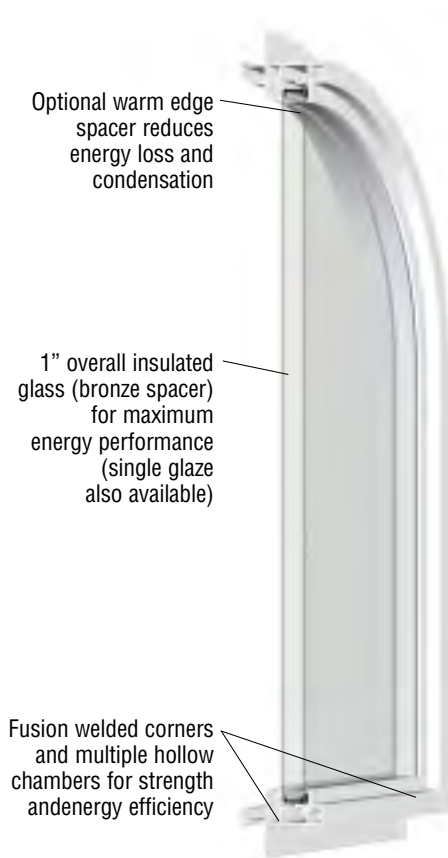
provide the strongest corner in the industry. Find out how long the "other guys" weld.

- **INTERNAL GRIDS** are available. Cheaper windows will offer roll formed aluminum grids but Fleetwood customers will not accept that. We therefore are only offering a 1" extruded grid.
- **1" INSULATED GLASS** reduces heat transfer and adds to your comfort. (An optional **"warm-edge" spacer** is available for even better performance.) Authorized Dealers can buy this product without glass. If you desire factory glazing and the subsequent warranty, factory glazing must be specified.
- **TANDEM WHEELS AND STAINLESS STEEL TRACK** on the Series 300-HS provide for effortless operation. Two large 3/4" wheels with stainless steel ball-bearings, all **riding on a unique stainless steel track**, not just a track cover.
- **ROLL FORMED SCREEN FRAMES** are acceptable on "competitive windows" but Fleetwood customers require enrichments. We are proud to be the only vinyl window company that offers **ONLY** extruded aluminum screen frames. **Screens take so much abuse, it is a shame to skimp.**
- **THREE FRAMES** are available in the 300-HS Horizontal Slider, 3-3/8" Nail-On with 1" set-back, 3-3/8" Block, and 3-3/8" Retrofit.

- **REMOVABLE SASH** from the inside makes window cleaning so much easier.
- **COLORS AVAILABLE** in the Malibu 300-HS are white and almond.
- **RUGGED CONSTRUCTION** in the master frame and panels provide durability, and a beautiful compliment to all types of construction.
- **ANTI-LIFT BLOCKS** **prohibit the removal of the sash** when the window is locked.
- **NFRC RATING** guidelines are met by all Fleetwood vinyl windows. Call the factory for a list of values, or visit us at www.fleetwoodusa.com
- **WEATHER PERFORMANCE** is no problem for the Malibu 300-HS. It is designed for luxury homes that demand proven integrity in severe weather conditions.
- **A COMPLIMENTARY fixed window system** is also available (see back page).



MALIBU SERIES 300-F FIXED WINDOW



- **SPECIAL SHAPES** available in all Fleetwood fixed windows, including half-rounds, full circles, **octagons**, and ellipses.
- **CORNER INTEGRITY?** The fusion weld process that joins the frame and vent corners is critical for strength and leak prevention. Fleetwood gives a customized touch to each window and provides a 30-second weld to provide the strongest corner in the industry. Find out how long the “other guys” weld.
- **1” INSULATED GLASS** reduces heat transfer and adds to your comfort. (An optional “**warm-edge**” spacer is available for even better performance.) Authorized Dealers can buy this product without glass. If you desire factory glazing and the subsequent warranty, factory glazing must be specified.
- **INTERNAL GRIDS** are available. Cheaper products will offer roll formed aluminum grids but Fleetwood customers demand better quality. Therefore, we only offer a 1” extruded grid which has a sculpted design. This grid looks rich but is affordable.
- **A COMPLETE LINE OF GLASS OPTIONS** allows you to achieve maximum comfort and efficiency.
- **THREE FRAMES** are available in the 300-F Fixed, 3-3/8” Nail-On with 1” set-back, 3-3/8” Block, and 3-3/8” Retrofit.
- **MULTI-CHAMBERED VINYL CONSTRUCTION** gives assurance of strength, performance, and durability.
- **ENERGY RATED:** All Fleetwood Vinyl Windows meet NFRC rating guidelines.
- **THE MALIBU 300-F is designed to allow mulling** of several fixed windows, and/or sliding or single hung.



***Real-Life Desert Testing**

A test house built in the Arizona desert—with southern exposure on the outside and air conditioning on the inside—is used to conduct real-life, long-term field tests on our vinyl windows.

***Structural Performance**

Fleetwood windows and doors meet or exceed strict structural performance standards as established by AAMA. Performance tests include resistance to air infiltration, water leakage, forced entry, and wind load pressure. This photo shows a wind load test in progress.



***Thermal Performance**

All our windows are built to meet or exceed thermal standards for maximum energy efficiency. This map, which shows the average daily direct solar radiation is used as a measure for designing Fleetwood windows to perform in the toughest conditions.

***Weatherability Test**

Another AAMA test is the Weatherability Test. This test confirms the vinyl's performance (color change or retention, plus impact resistance) for various climates.



**Even though Fleetwood Vinyl Windows & Doors are the most durable on the market, we strongly recommend that homes exposed to extreme heat use our aluminum products.*

IMPORTANT

The **Limited Lifetime Warranty** and the **Care & Maintenance Instructions** are available from the website or directly from the factory.

Certified Quality

Fleetwood vinyl windows and doors are AAMA and NFRC certified, and ENERGY STAR® certified when used with Low E glass. They meet or exceed stringent rating guidelines, assuring you a lifetime of superior performance and energy savings.



**FLEETWOOD
WINDOWS & DOORS**

Mailing Address: PO Box 1086, Corona CA 92878-1086
Physical Address: 395 Smitty Way, Corona CA 92879
Phone: 800-736-7363, 951-279-1070
Fax: 951-279-8068
Web: FleetwoodUSA.com
E-mail: Sales@FleetwoodUSA.com
All details subject to change without notice.
April 15, 2009

DISTRIBUTED BY:

